

EQUIP. TYPE *R-390A/URR* EXP. NO.

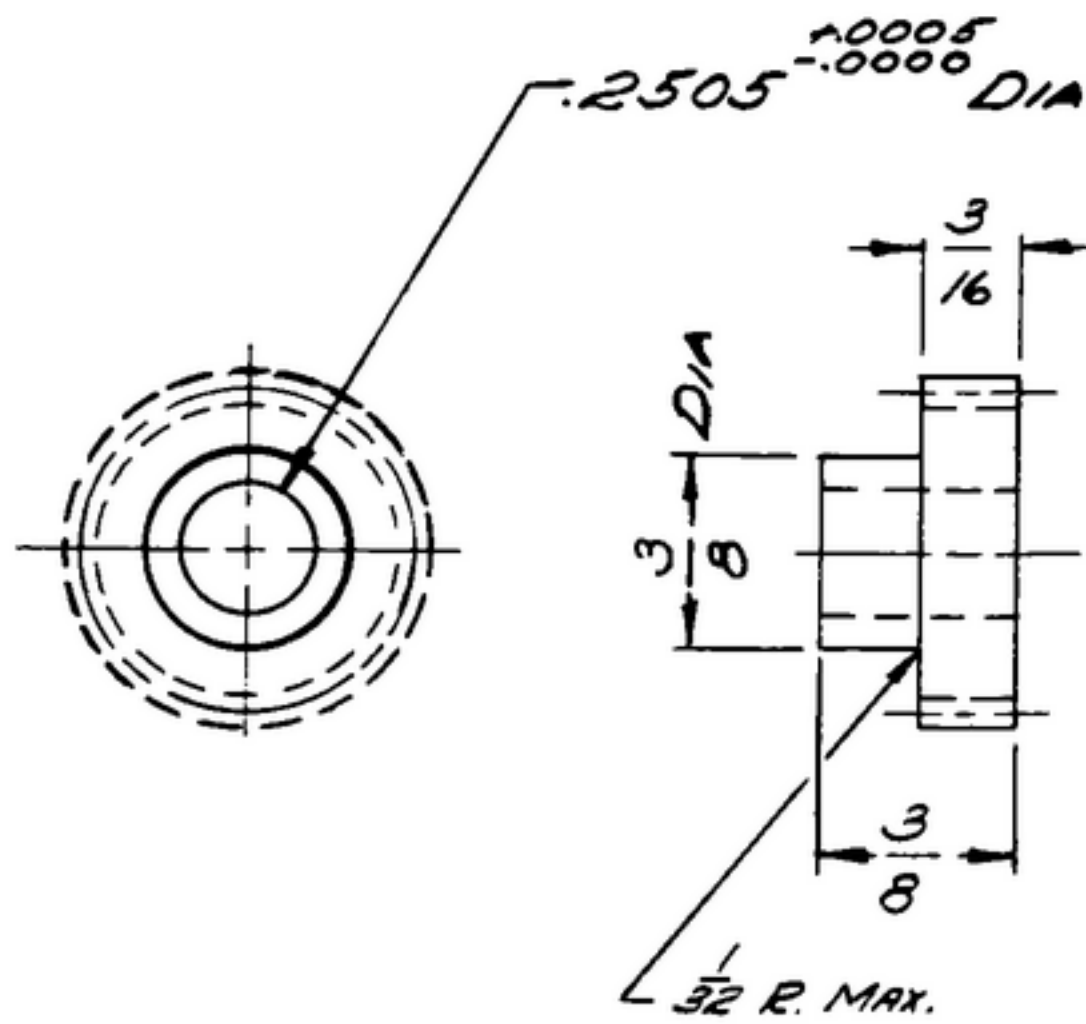
COL. 540 7444 002

NOTICE: WHEN GOVERNMENT DRAWINGS, SPECIFICATIONS, OR OTHER DATA ARE USED FOR ANY PURPOSE OTHER THAN IN CONNECTION WITH A DEFINITELY RELATED GOVERNMENT PROCUREMENT OPERATION, THE UNITED STATES GOVERNMENT THEREBY INCURS NO RESPONSIBILITY NOR ANY OBLIGATION WHATSOEVER AND THE FACT THAT THE GOVERNMENT MAY HAVE FORMULATED, FURNISHED, OR IN ANY WAY SUPPLIED THE SAID DRAWINGS, SPECIFICATIONS, OR OTHER DATA IS NOT TO BE REGARDED BY IMPLICATION OR OTHERWISE AS IN ANY MANNER LICENSING THE HOLDER OR ANY OTHER PERSON OR CORPORATION, OR CONFERRING ANY RIGHTS OR PERMISSION TO MANUFACTURE, USE, OR SELL ANY PATENTED INVENTION THAT MAY IN ANY WAY BE RELATED THERETO.

THIS DOCUMENT HAS BEEN PURCHASED BY THE GOVERNMENT AND MAY BE REPRODUCED AND USED IN CONNECTION WITH ANY GOVERNMENT PROCUREMENT OR MAINTENANCE OPERATION.

* FOR INFORMATION ONLY. CONTRACTOR MAY AT HIS OPTION DEVIATE FROM THESE PROCESS DETAILS.

REVISIONS			
SYM	DESCRIPTION	DATE	APPROVAL



CR5, COMP 3035, COND A OR B, SURFACE COND 4, PER SPEC MIL-S-7720.

*FINISH: E300 PER SPEC. MIL-F-14072.
* ~~COLLINS 558 0225 00.~~*

NOTES:
1. GEAR DATA.
NORMAL DIAMETRAL PITCH 48
NORMAL PRESSURE ANGLE 20°
NUMBER OF TEETH 21
THEORETICAL PITCH DIA. 6.187
HELIX ANGLE 45° RIGHT HAND
BACKLASH .000 TO .001 WHEN REFERRED TO THE THEORETICAL PITCH CIRCLE.
TOTAL COMPOSITE ERROR NOT TO EXCEED .003 WHEN MEASURED WITH MASTER GEAR
AMERICAN STD. INVOLUTE TOOTH FORM ALL TERMS USED AS DEFINED BY A.G.M.A. STDS.

COLLINS PART NO.	ITEM	QTY	PART NO.	DESCRIPTION	MATL	MATL SPEC
------------------	------	-----	----------	-------------	------	-----------

LIST OF MATERIAL *COLLINS PART NO. 558 0232 002*

DRAWN <i>HENRY</i>				CHECKED <i>Rlm</i>		APPROVED		COLLINS RADIO CO. CEDAR RAPIDS, IOWA 14214 - PH 51-93		DEPARTMENT OF THE ARMY SIGNAL CORPS ENGINEERING LABORATORIES FORT MONMOUTH NEW JERSEY	
UNLESS OTHERWISE SPECIFIED: DECIMAL DIMENSIONS INCLUDING HOLE SIZES MAY VARY ±.008 FRACTIONAL DIMENSIONS INCLUDING HOLE SIZES MAY VARY ±1/64 MACHINED ANGLES MAY VARY ±.1° SHEARED ANGLES MAY VARY ±.25° BROKEN ANGLES MAY VARY ±.1° ECCENTRICITY BETWEEN ANY DIAMETERS ON THE SAME CENTERLINE SHALL NOT EXCEED .010 TOTAL INDICATOR READING. ALL DIMENSIONS ARE FINISH DIMENSIONS INCLUDING APPLIED FINISH AND ARE GIVEN IN INCHES.				SIGNAL CORPS		REVIEWED <i>PME</i>		APPROVED <i>HLV</i> <i>PME</i>			
558-031-003 - 1				SM-C-248962		J.D.-248775		GEAR-HELICAL		SM-B-248883	
APPLICATION				NEXT ASSY		USED ON		DATE <i>7 DEC 55</i>		SCALE <i>2/1</i>	

FD-794-874-2871-10-A4706-39007

WHEN REFERRING TO THIS DRAWING STATE DRAWING NO., APPLICABLE ISSUE SYMBOL, IF ANY, AND DATE